



ANDROID SMARTBOARD

All in one Smartboard with Android 12

ARV200 Series : Sizes 65", 75", 86"



Optional Portable TV Stand

Powered by
Android 12



Integration with
Workspace
for Education



Work with
1000+ Apps
from
Play Store



Support
Google
Workspace
for Education



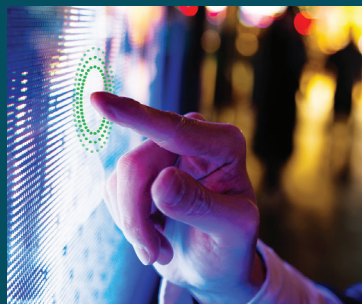
Scribble &
annotate

**FREE !!
SOFTWARE**
FREE IWB Software and
Training Provided



Bringing the Latest Learning Advantages to your Classroom and Meeting Room

This is your gateway to the technology, tools and training for 21st century teaching and collaboration. We will help you choosing the right technology for your unique needs and maximizing the learning benefits of using your Smartboard and reload technologies.



Infrared Zero Bonding Technology

The updated zero bonding technology reduces parallax so that we can write as if on a piece of paper. Even when looking from the side, we may hardly discern the distance between the fingertip and the coloured display. It also avoid fungus built-up and condensation.



Android only Operating System

Avoid hassle and confusion when use dual OS it can make user stress because of its complexity. With android operating system utilized by 95% of clients so the majority of applications are compatible. Similar usage as conventional phone making it easier to use like we used to.

GOOGLE PLAY STORE 1000+ APPS AVAILABLE



Support Google Workspace For Education

You can download a wide range of apps from Google Playstore on your Android device. From entertainment and productivity to social media and education, you can find apps for almost any purpose on Playstore.



The Universal Mirroring Receiver

Screen transmitting software "E-Share" Premium license

Allows your device such as Mac, windows PC, iPhone, iPad, Android, Nexus or Chromebook to wirelessly share their display over to the smartboard, instantly turning the room into a collaborative space.

Display specification

Panel size	65/75/86 Inch
Resolution	3840.2160
Rate	3000: 1
Respond time	9.5ms
Back light	DLED
Working power	≤320W
Speaker	80/10W*2

Backlight	LED backlight
Brightness	450cd/m²
Viewing angle	178°,178°
Display color	8 bit/16.7 Billion
Panel life	≥50000 hours
Working voltage	100V-240VAC,50/60Hz
Net weight/Gross weigh	73KG+5KG/91Kg+5KG

Touch screen specification

Touch screen	Zero Bonding IR Touch
Install way	Fixed inside with glass
Touch points	20 touch points
Respond time	≤5ms
Driver way	USB

Accurate	1.5mm
Writing way	Finger or pen ≥8mm opaque objects
Writing screen media	4mm Physical toughened glass
Driver	Free driver
Usage life	50000 Hours

Android specification

Android OS	12.0 (upgradable to 13.0)	Chip	RK3588
CPU	A73*4	RAM/Storage	8GB / 128GB
Interface	HDMI*4 USB2.0*3 USB3.0*2 SD*1 AV in*2 AV out*1	RJ45*2 VGA in*1 Audio input*1 VGA out*1 Audio output*1	Touch screen USB*2 RS232*1 RF*1 WIFI*1 MIC*1

Israk Solutions Sdn. Bhd (1289622-T)

Wisma Israk, No. 20, Jalan BP 6/13, Bandar Bukit Puchong, 47120, Puchong, Selangor

<http://www.israk.my> info@israk.my 03-8966 2405 017-298 7182

We are ISO certified Company and Shariah Compliant

